

Case Study

INFRASERV HÖCHST HEATING POWER PLANT

Frankfurt-Höchst, Germany

Branch
Utilities

Project
Modernization of the control room and offices
with a WEYTEC workplace, monitoring and
large-screen visualization solution in the Höchst
heating power plant.





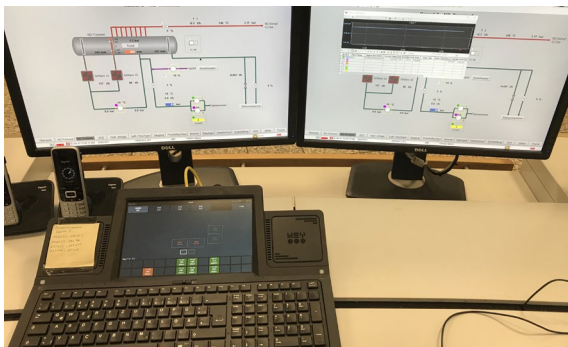
Customer

The combined heat and power plant operated by Infracerv GmbH & Co. Höchst KG and located in the company's own industrial park, supplies Höchst with electrical energy and industrial steam power.

All operations and processes running the combined heat and power plant are managed and monitored in a on-site control room, which operates 24/7 to meet the stringent requirements for the secure and stable supply of heat and energy.

Challenge

The goal was to create two enhanced workplaces for control room operators, four workplaces in adjacent offices and one operator position in a conference room. Infracerv Höchst opted to relocate the computer systems initially installed in the operator desks to a system and emergency backup room, to house them more securely and cool them more efficiently. A new operating concept was also clearly needed because operators previously needed multiple keyboards to operate all their systems and meet their functional responsibilities. In addition to standard workplace screens, each office desk was to be equipped with one large high-resolution screen used to monitor the plant's ongoing processes. The existing video wall was to be integrated into the new system and the entire solution needed to be operated comfortably and securely. Since the control room and various offices are distributed across the heating and power plant facility, the new system had to provide a network architecture and infrastructure capable of integrating locations over long distances.



New KVM Workplace ...



... with a video wall



Solution

Operating all systems from the workplaces

All 25 of Infraser Höchst computers are connected to the WEYTEC distributionPLATFORM. They can all be controlled using the smartTOUCH multifunctional keyboard and displayed on any monitor or video wall screen with a single key-stroke. The WEYTEC solution is completely non-intrusive, requiring the installation of neither software nor drivers on the computers.

Large screen visualization

Each of the eight rear projection displays (4x2 array) in the control room video wall and the four large, high-resolution UHD LCD monitors installed in the offices receives video input from a WEYTEC smartVISUAL receiver. With WEYTEC smartVISUAL, operators can select and display the graphic signals outputs from any of the 25 computers connected to the WEYTEC distributionPLATFORM solution in freely positionable and scalable windows on any screen. Programmable presets on the smartTOUCH keyboard makes it fast and easy for operators to switch between predefined display scenarios.

Staff members can control the video wall with simple keyboard clicks from any workplace, as if they were their operating their own computer screens. Users can switch between data sources, applications and alarms as required, either manually or triggered automatically by alarms. Display windows can be opened and closed, superimposed on each other, moved, sized, and refreshed. The solution is extremely flexible and convenient.

Benefits

Infraser Höchst found the answers to all their questions in WEY Technology, the partner that provides state-of-the-art and future-proof KVM and visualization solutions from a single source. An important decision-making factor for Höchst is that WEYTEC develops and manufactures system components in-house, and can therefore respond expeditiously to specific customer needs. WEYTEC's broad portfolio of professional support services includes Planning, Testing, Installation and Training. Deploying the WEYTEC distributionPLATFORM, smartVISUAL and smartTOUCH keyboards to integrate and operate all systems efficiently has significantly simplified operator workflows at the Infraser Höchst Heating Power Plant in Frankfurt, Germany.

Facts & Figures

WEYTEC distributionPLATFORM

- 2 Control room workplaces
- 4 Office space workplaces
- 1 Emergency backup workplace
- 1 Operator workplace in a conference room
- 25 PC sources
- 4 WDP switching fabrics deployed over fiber optic rings

Workplace Optimization

- 8 WEYTEC smartTOUCH keyboards

WEYTEC visualizationPLATFORM

- 1 WEYTEC smartVISUAL Master
- 12 WEYTEC smartVISUAL Receivers
- smartVISUAL manages the video wall & high-resolution screens